

INSTITUTIONAL DEVELOPMENT PLAN



DR. VITHALRAO VIKHE PATIL FOUNDATION'S

MEDICAL COLLEGE AND HOSPITAL

Accreditations: NAAC A+, NABL, NABH, ISO, 2(f) UGC Act

"BEST MEDICAL COLLEGE AWARD" by MUHS Nashik



**Address: Opp. Govt. Milk Dairy, Vadgaon Gupta, Post: MIDC,
Ahilyanagar-414111 (Maharashtra)**

Tel No: (0241) 2778042, 2777059, Fax: (0241) 2779782

Website: www.vimsmch.edu.in Email: dean@vimsmch.edu.in

Overview

Dr. Vithalrao Vikhe Patil Foundation's Medical College & Hospital, Ahilyanagar has emerged as an excellent center in medical education, training, and research at the national level while extending compassionate healthcare services to the downtrodden at their doorsteps.

The extreme shortage of medical facilities inspired the Foundation to establish the college at Viladghat, Ahilyanagar in 2004. Under the visionary leadership of Late Dr. Balasaheb Vikhe Patil (Padmabhushan Awardee), the institute has achieved remarkable milestones in academics and community health services.

The College offers an MBBS program with an intake of 200 students per year and postgraduate courses in 10 disciplines. Recognized by the Medical Council of India (now National Medical Commission) in 2009 and affiliated to MUHS Nashik, the 33-acre medical complex includes the 800+ bedded Dr. Vikhe Patil Memorial Hospital along with dedicated urban and rural health training centers.



NAAC Accredited



NABH Certified



ISO Standards

Vision

To achieve “Global Excellence” in experiential and technology-driven medical education, transformative research, patient centred clinical care, promotional and preventive health care services, through creative medical professionals, leading to national and global development.

Mission

- To create new genera of doctors with quality medical knowledge, highest levels of skill and competence, committed to excellence, guided by professional ethics, moral and social values, ready to serve and lead the world for better tomorrow.
- To provide excellent and comprehensive medical education and hands-on training to undergraduate and postgraduate students for the advancement of medical knowledge, skills, competences and research, in order to make significant contributions to raise the health standards of all the citizens of our nation and across the globe.
- To extend and share the knowledge acquired and new knowledge generated for the development of the society in health management, through collaborative research, extension and outreach activities.
- To provide primary, secondary and tertiary health care services of global standards to the needy population, especially the rural and marginalized sections of the society.
- To promote the highest standards of quality and ethical values among the students and staff in patient care, medical education, training and research, leading to excellent performance in diverse professional and cultural settings of our country.
- To promote integrated sustainable development, environmental conservation, protection and preservation of culture, heritage, harmony and national integrity among all the stakeholders towards a humane society.

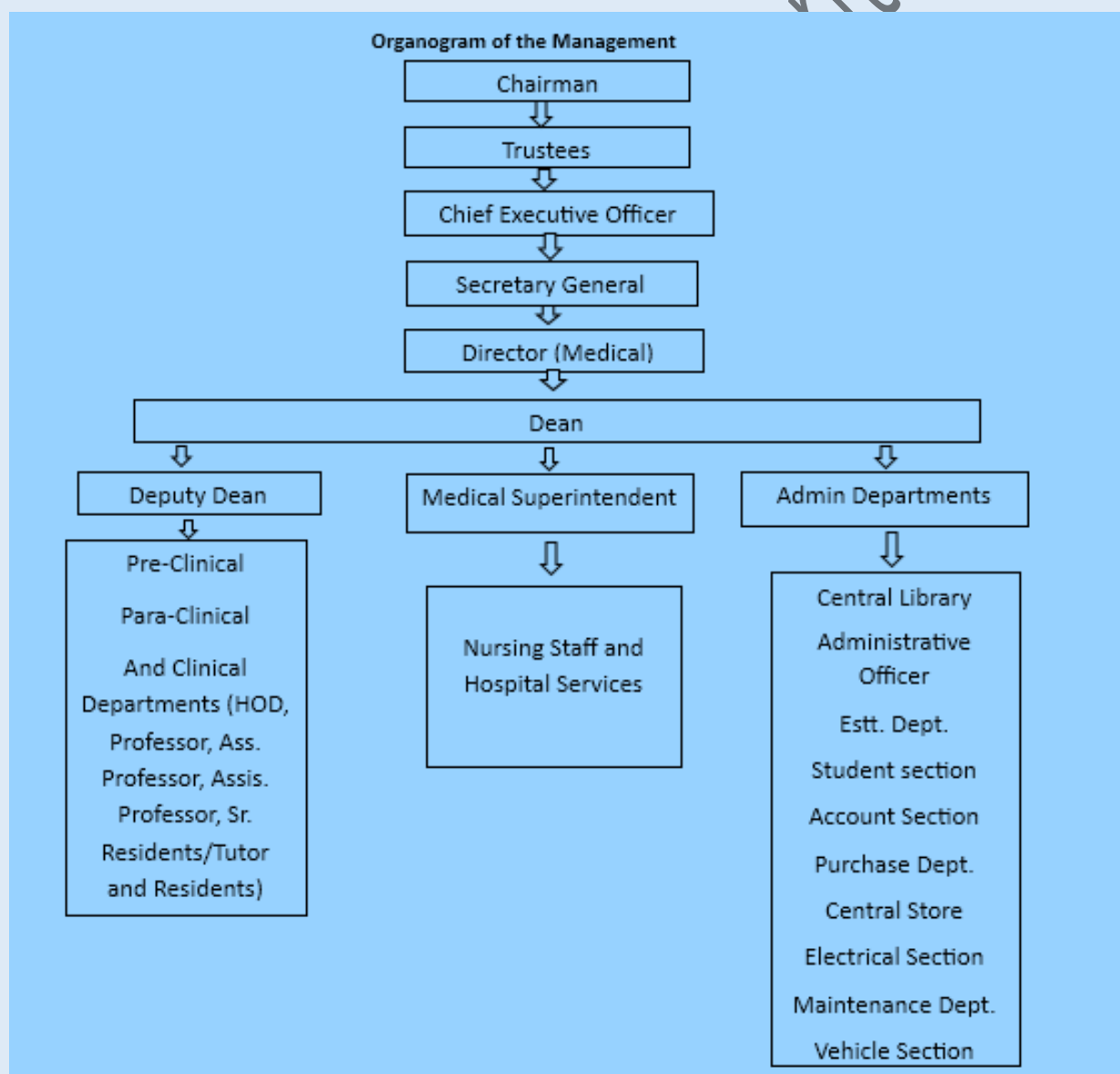
Institution Journey –Brief

Dr. Vithalrao Vikhe Patil Foundation’s Medical College & Hospital, Ahilyanagar has a rich legacy of service in education, healthcare, agriculture, and social development. Inspired by the visionary leadership of Padmashri Dr. Vithalrao Vikhe Patil, a pioneer of the cooperative movement in India, the Foundation was established with the objective of providing quality education and community welfare services to rural and urban populations. Over the years, the Foundation has grown into a multi-disciplinary educational and

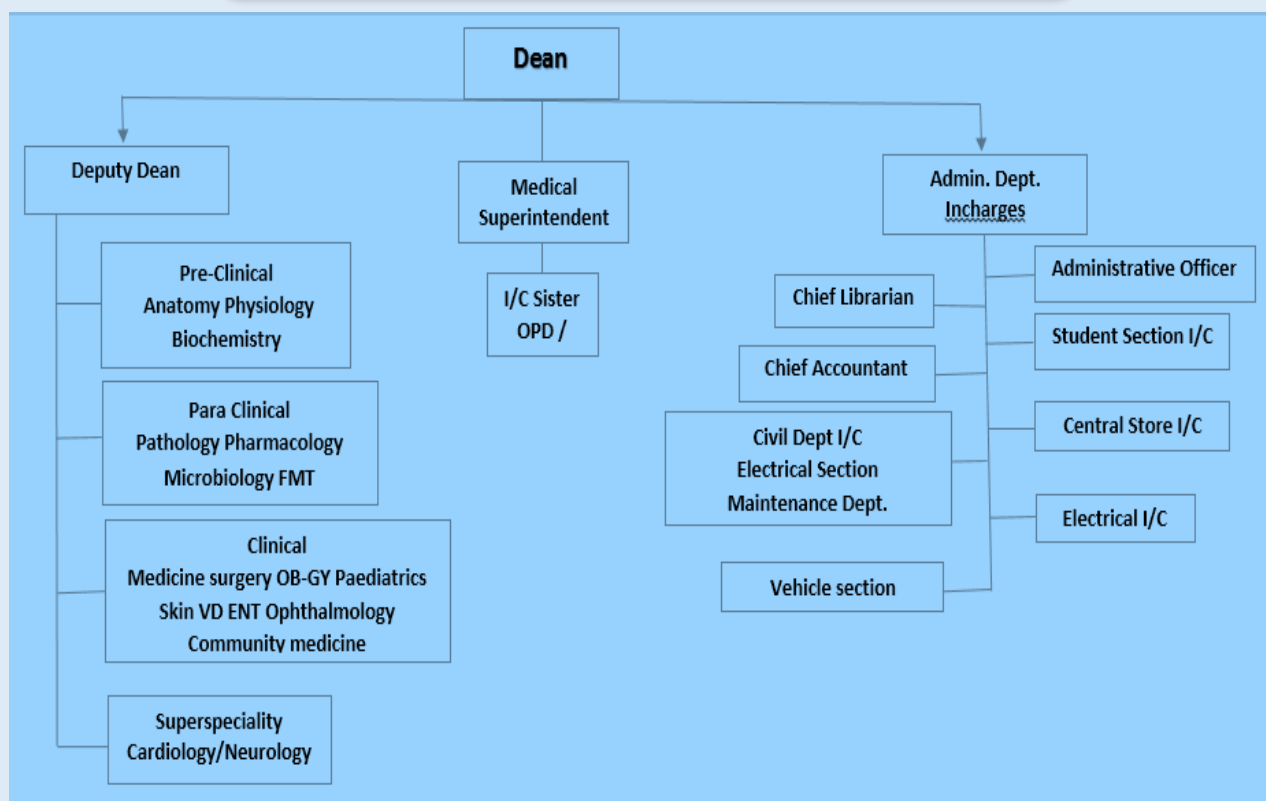
healthcare organization, establishing institutions ranging from schools and colleges to professional institutes in medicine, engineering, nursing, physiotherapy, management, agriculture, and vocational training. The Foundation's flagship institution, Dr. Vitthalrao Vikhe Patil Foundation, has consistently focused on academic excellence, innovation, research, and social responsibility.

The establishment of modern healthcare facilities, including medical colleges and hospitals, further strengthened its commitment to community service by providing affordable and quality healthcare. Through continuous expansion, infrastructure development, accreditation achievements, and industry-academia collaborations, the Foundation has emerged as one of Maharashtra's leading educational trusts.

Organogram of the Management



Organogram of the Institution



Course Offered

Sr. No	Courses Offered	Intake Capacity
1.	M.B.B.S	200 Seats
2.	M.D Pathology	4 Seats
3.	M.D. General Medicine	9 Seats
4.	M.D. Dermatology	3 Seats
5.	M.D. Paediatrics	8 Seats
6.	M.S. General Surgery	12 Seats
7.	M.S. Orthopaedics	9 Seats
8.	M.S. Obstetrics & Gynaecology	9 Seats
9.	M.S. Ophthalmology	6 Seats
10.	M.D. Anaesthesiology	8 Seats
11.	M.D. Radio-Diagnosis	8 Seats
12.	Ph.D in Anatomy	1 Seat
13.	Ph.D in Medical Biochemistry	1 Seat
14.	Ph.D in Pharmacology	1 Seat
15.	Ph.D in Pathology	1 Seat

Facilities and Infrastructure

Infrastructure that encourage the institute's educational and unofficially activities were organized and built, demands for building space, lab equipment, books and journals for library, IT resources, etc. with the anticipation of increased intake.

PHYSICAL FACILITIES

Infrastructure that encourage the institute's educational and unofficially activities were organized and built, demands for building space, lab equipment, books and journals for library, IT resources, etc. with the anticipation of increased intake.

- **Facilities for Teaching-Learning:**

A total of 5 well-equipped classrooms with ICT capabilities that can hold 240 students each, a 1200-person examination hall, 40 departmental demonstration rooms, 21 libraries/seminar halls, a fully automated central library, reading rooms for undergraduate and graduate students, and staff, as well as 31 specialized laboratories, 7 museums, including the patented pediatric & medico-legal museum of FMT, cranial nerve museum of anatomy and skill lab.

- **Facilities for Clinical Learning:**

A contemporary, well-designed laboratories with clinical learning facilities such as cranial nerve museum learning, cranial nerve examination, mootcourt, bacterialculture preparation, Histopathology slide preparation, normal saline preparation by all first and second year students. In addition to offering super-specialties including oncology, neurosurgery, cardiac, joint replacement, and IVF centers, the institute also offers 1 RHTC, 1 UHC, and 4 RHCs for field practice as a community learning resource situated in the villages.

- **Teleconferencing Facility:**

In a separate, well-equipped conference room with LCD television displays, cameras, microphones, and VGA connections, the institute includes a video teleconferencing facility for use by students.

Sports, Recreation and Holistic Development Facilities

The institution strongly believes that participation in sports, cultural activities, and co-curricular events is essential for the holistic development of students and staff. To foster physical fitness, mental well-being, teamwork, leadership, and a spirit of healthy competition, the campus provides world-class sports and recreational infrastructure.

The institution boasts a well-developed Sports Complex spread over 4,446.86 sq. m., equipped with modern facilities catering to both indoor and outdoor sporting activities. Indoor facilities include separate air-conditioned gyms for men and women, three badminton courts covering 528 sq. m., and dedicated halls for table tennis, chess, and carrom spanning 167.87 sq. m.

The outdoor sports infrastructure includes a tennis court (648 sq. m.), cricket ground (5,166.50 sq. m.), basketball court (510 sq. m.), kho-kho ground (464 sq. m.), volleyball court (162 sq. m.), and a football ground (6,063.91 sq. m.). The campus also houses a well-maintained Olympic-size swimming pool spread across 2,456.19 sq. m., along with spacious locker rooms, dressing rooms, waiting areas, and hygienic sanitation facilities covering 223.18 sq. m.

To ensure professional guidance and athlete welfare, qualified sports trainers, physiotherapists, and dieticians are available to support students and staff in achieving their fitness and performance goals.

Recognizing the importance of mental and emotional well-being, the institution provides dedicated facilities for Yoga and Meditation, helping individuals enhance concentration, mindfulness, and overall wellness.

The institution further promotes cultural enrichment and personality development through its magnificent Amphitheatre with a seating capacity of over 2,000 and an area of 4,098 sq. m., as well as a fully equipped Auditorium spread across 1,325 sq. m. with a seating capacity of 1,200. These venues serve as vibrant platforms for cultural programmes, student activities, value-based education, and various club activities including sports, nature, and cultural clubs.

In addition, each hostel is equipped with comfortable common rooms featuring television and recreational facilities, providing opportunities for social interaction, relaxation, and community living.

Through these comprehensive facilities and opportunities, the institution nurtures physical fitness, mental resilience, cultural awareness, leadership qualities, and a lifelong spirit of excellence among students and staff.

The Hospital provides Super - specialty services

- Sindhutai Vikhe Patil Cardiac Center
- Joint replacement center
- Liver and renal transplant center
- Dialysis center
- Oncology center
- PET Scan
- Covid care center
- Covid vaccination center
- FDA-approved blood bank
- Oxygen generation plant
- IVF center

Supporting Facilities provided

- Mobile camp van
- Cardiac ambulance
- Multi-diagnostic camps
- Warkary Arogya Camp
- Hirani Kaksh for breast feeding
- All government schemes like MPJAY, BPL, NPCB, etc.
- Daycare center
- Dharamshala
- Crutch (Palnagarh)
- Sindhu Thali

Our Institution excels academically and offers various extracurricular activities through clubs and societies, such as:

- Academic cell
- Research cell
- Social cell

- Women cell
- Bioethics cell
- International cell
- Moot court
- Natures club
- Sport club
- Cultural club
- VIMS wall magazine
- VIMS Health Science Journal
- VIMS alumni
- Former Teachers Association
- NSS Unit
- Youth Red Cross Society Cell (YRC)
- Rotary Club
- MET Unit
- Pediatric museum
- Research museum
- FMT digital museum
- Anatomy Cranial Nerve Museum
- Academic wall
- Art gallery
- Wall of fame
- Urban and Rural Health Centre

Its extensive infrastructure includes:

- Biodiversity Park
- Herbal garden
- Toxicology garden
- Butterfly Garden
- Amphitheatre
- Bharat Ratna. Dr. A.P.J. Kalam Multipurpose Hall
- Indoor sports complex
- STP and ETP plant
- Solar plant
- E- vehicles
- Disabled person-friendly infrastructure.
- Wi-Fi zone

INSTITUTIONAL PREPAREDNESS FOR NATIONAL EDUCATION POLICY (NEP) 2020

The institution is committed to embracing the vision of the National Education Policy (NEP) 2020 and has undertaken several initiatives to align its academic, research, and administrative practices with the policy's objectives. As a healthcare education institution, we recognize the importance of developing competent, compassionate, and socially responsible healthcare professionals through a holistic and learner-centric approach.

The institution has adopted competency-based and outcome-based education practices that promote critical thinking, problem-solving abilities, clinical skills, and lifelong learning. Interdisciplinary and multidisciplinary learning opportunities are encouraged through value-added courses, electives, workshops, seminars, and collaborative academic activities. Students are provided exposure to ethics, communication skills, environmental awareness, and professional values to ensure their overall development.

Research and innovation form an integral part of institutional preparedness for NEP implementation. The institution actively promotes a research culture through faculty and student research projects, research grants, publication support, and training programmes in research methodology and biostatistics. Innovation and entrepreneurship are encouraged through various academic and extracurricular initiatives.

Technology-enabled teaching and learning have been strengthened through the use of digital classrooms, e-learning resources, learning management systems, simulation-based learning, and online assessment tools. Faculty members are regularly trained in modern pedagogical practices and educational technologies through Faculty Development Programmes, workshops, and continuing professional development activities. Student support mechanisms such as mentoring, counselling, career guidance, remedial coaching, and skill enhancement programmes contribute to a learner-centric educational environment. The institution also promotes holistic development through sports, cultural activities, community outreach programmes, and social responsibility initiatives.

The Internal Quality Assurance Cell (IQAC) plays a pivotal role in planning, monitoring, and reviewing activities aligned with NEP 2020. Strategic planning, policy formulation, stakeholder participation, and continuous quality improvement measures ensure effective implementation of NEP objectives.

Institution aims to further strengthen multidisciplinary learning, research excellence, digital transformation, skill-based education, and academic flexibility in accordance with the evolving recommendations of NEP 2020. Through these efforts, the institution remains dedicated to creating an inclusive, innovative, and future-ready educational ecosystem that prepares healthcare professionals to meet national and global healthcare challenges.

Strategic Plan

A. Short-Term Goals (2025–2027)

1. Start new DM super-specialty programs in Neurology, Cardiology, Onco-surgery, Urology, Nephrology, and CVTS.
2. Introduce MSc programs in Anatomy, Physiology, Microbiology, Pharmacology, and Biochemistry.
3. Convert classroom lectures into experimental learning through real-time demonstrations and simulations.
4. Enhance teaching by integrating practical demonstration model into lecture content.
5. Upgrade existing classrooms, hostels, and labs with modern infrastructure and smart learning tools.
6. Create Teaching-Learning Resource Centre (TLRC) and expand simulation-based training.
7. Initiate faculty training in outcome-based education (OBE) and innovative pedagogy.
8. Launch undergraduate research internship programs and in-house grant support schemes.
9. Establish a dedicated Central Knowledge Centre with AI-supported research tools and e-resources.
10. Begin development of a Super-specialty Research Block.
11. Establish digital systems for student feedback, academic records, and performance tracking.
12. Accelerate digitalization of administrative and academic processes to achieve 90% paperless functionality.
13. Host more annual innovation expos, student research meets, and community outreach clinics.
14. Expand digital and biometric infrastructure for library, laboratories, and learning spaces.
15. Create VR/AR – enabled skill labs and smart libraries.

B. Long-Term Goals (2028–2030)

1. Achieve 100% smart classroom conversion and develop a digital campus infrastructure.
2. For constructing 16 units of 2- BHK apartments and a set of modern 1- BHK apartments for faculty accommodation.
3. Operationalize the Super-specialty Block with Robotic Surgery, Precision Medicine Units, and advanced diagnostic centers.
4. Establish Centres of Excellence in Oncology, Preventive Cardiology, Geriatrics, and Endocrinology.
5. Integrate personalized learning analytics and AI-driven academic counselling systems.
6. File patents and strengthen collaborations with pharmaceutical and biomedical industries.
7. Achieve a 5-fold increase in indexed research publications and national research project participation.
8. Strengthen global academic collaborations, faculty exchanges, and student mobility.
9. Upgrade digital learning platforms with 24/7 access and multilingual support.
10. Attain top 50 position in NIRF ranking among Indian medical colleges.
11. Apply for status of Private/Deemed-to-be University by 2028.